



NCUA
National Credit Union Administration

Rendell L. Jones, CFO

Office of the Chief Financial Officer

NCUSIF Financial Statistics

For the Quarter Ended
September 30, 2019

NCUSIF Revenue and Expense

September 30, 2019

PRELIMINARY & UNAUDITED (In Millions)	Quarter Ended September 30, 2019	Year-to-Date September 30, 2019
Gross Income:		
Investment Income	\$76.9	\$230.9
Guarantee Fee Revenue	3.2	10.3
Other Income	-	0.4
Total Income	\$80.1	\$241.6
Less Expenses:		
Operating Expenses	\$48.2	\$143.5
Provision for Insurance Losses:		
Reserve Expense	5.1	39.4
NPCU AME Loss Expense (Reduction)	22.7	3.4
Corporate AME Loss Expense (Reduction)	(19.9)	(63.9)
Total Expenses	\$56.1	\$122.4
Net Income (Loss)	\$24.0	\$119.2

NCUSIF Summary Balance Sheets

September 30, 2019

PRELIMINARY & UNAUDITED (In Millions)	September 30, 2019	June 30, 2019
Assets		
Fund Balance with Treasury and Investments	\$15,429.6	\$15,378.3
Capitalization Deposits Receivable	549.6	-
Receivable from NPCU Asset Management Estates, Net	342.8	382.4
Receivable from Corporate Asset Management Estates, Net	316.5	266.9
Accrued Interest and Other Assets	77.9	70.7
Total Assets	\$16,716.4	\$16,098.3
Liabilities and Net Position		
Accounts Payable and Other Liabilities	\$22.2	\$4.3
Insurance and Guarantee Program Liabilities	115.9	111.9
Net Position – Capital Deposits	11,952.0	11,412.3
Net Position – Cumulative Results of Operations	4,626.3	4,569.8
Total Liabilities and Net Position	\$16,716.4	\$16,098.3

NCUSIF - Insurance and Program Guarantee Liabilities

September 30, 2019

PRELIMINARY & UNAUDITED (In Millions)	Quarter Ended September 30, 2019	Year-To-Date September 30, 2019
Beginning Reserve Balance:	\$ 111.9	\$ 119.1
Reserve Expense	5.1	39.4
Charges for Assisted Mergers	-	-
Charges for Liquidations	(1.1)	(42.6)
Ending Reserve Balance	\$115.9	\$115.9

* This table shows only NPCU Insurance and Program Guarantee Liabilities.

NCUSIF Portfolio

September 30, 2019

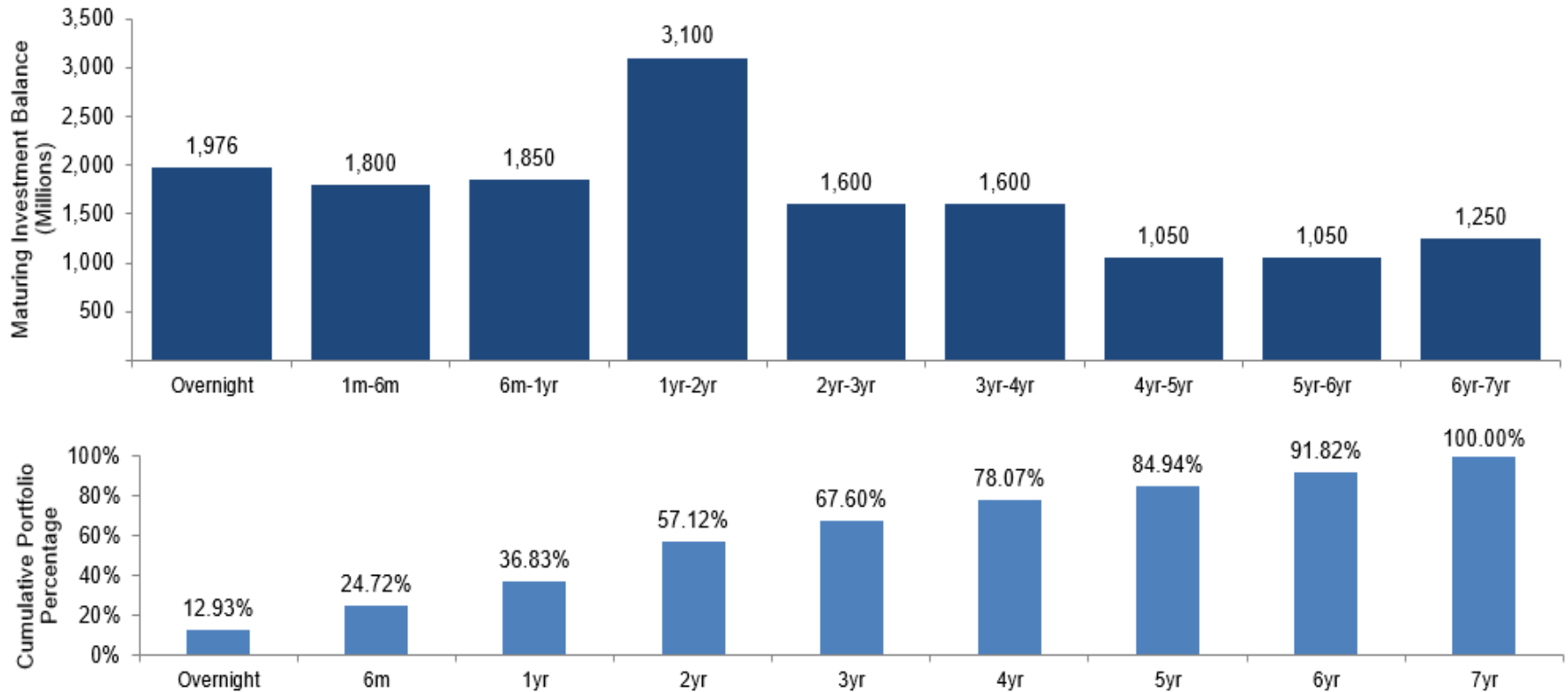
Investment Balance at Par: \$15.3 Billion

Weighted Average Life:

2.2 years

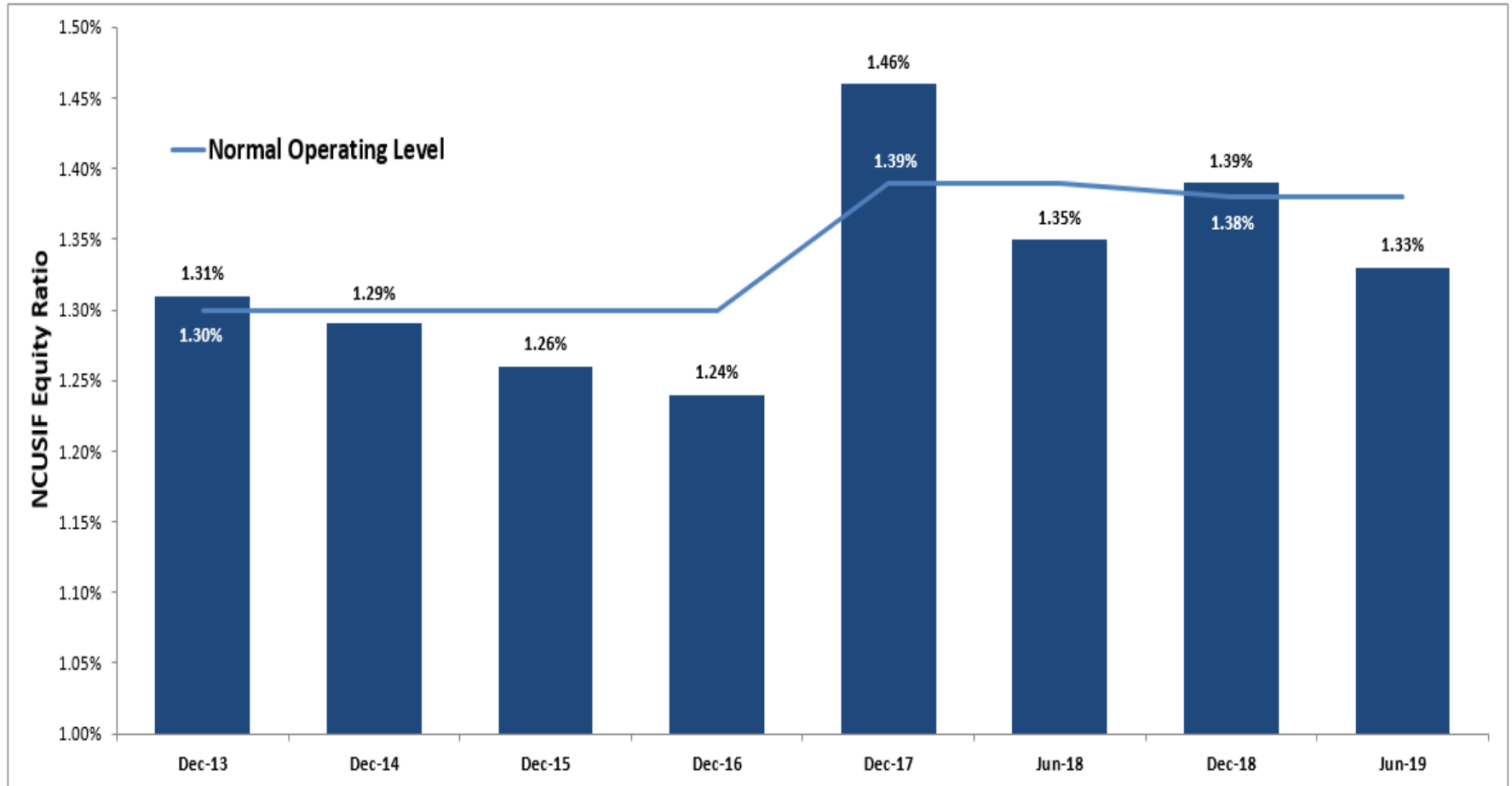
Weighted Average Yield:

1.94%

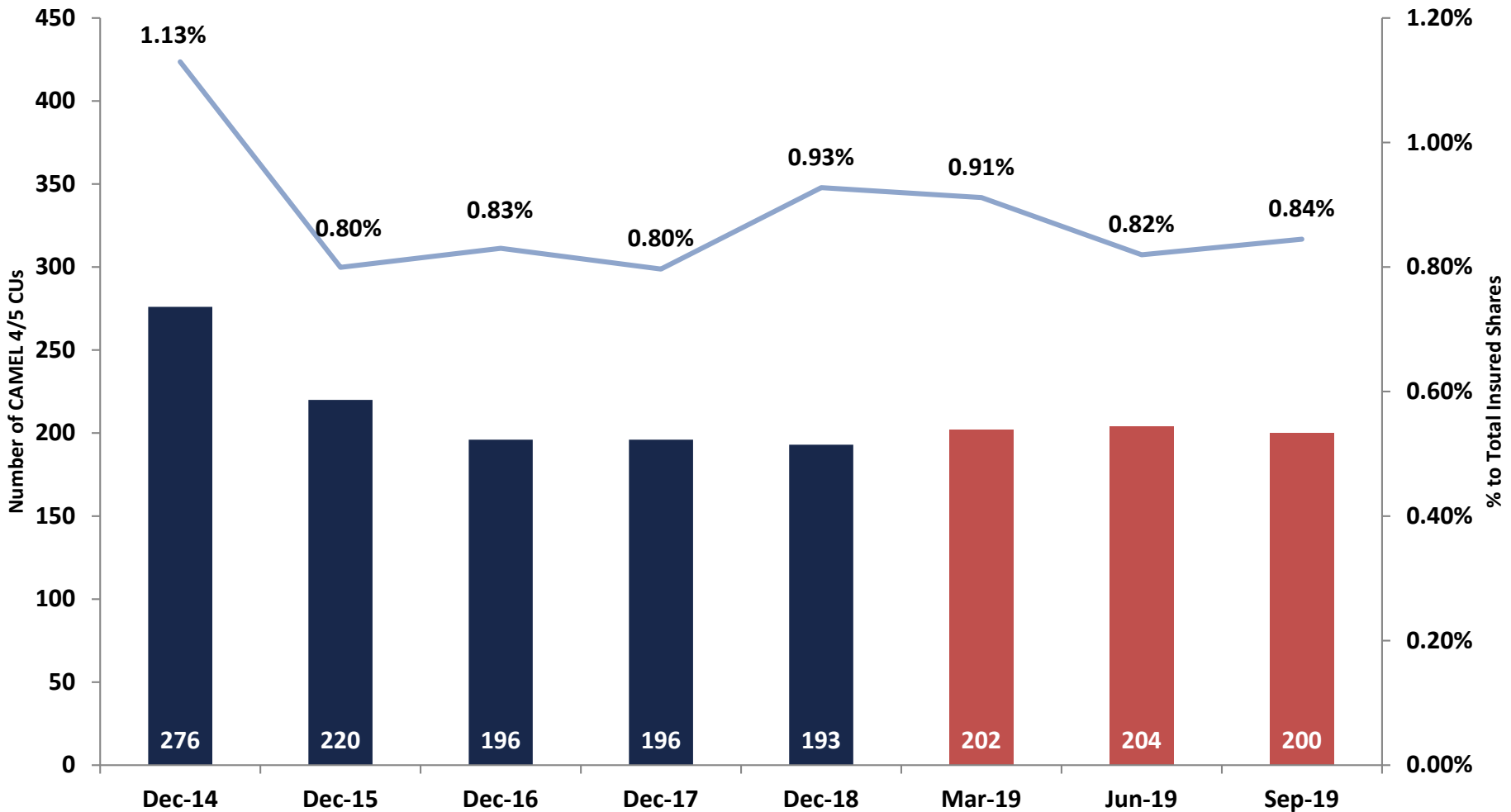


NCUSIF Equity Ratio

CY 2013 – CY 2019

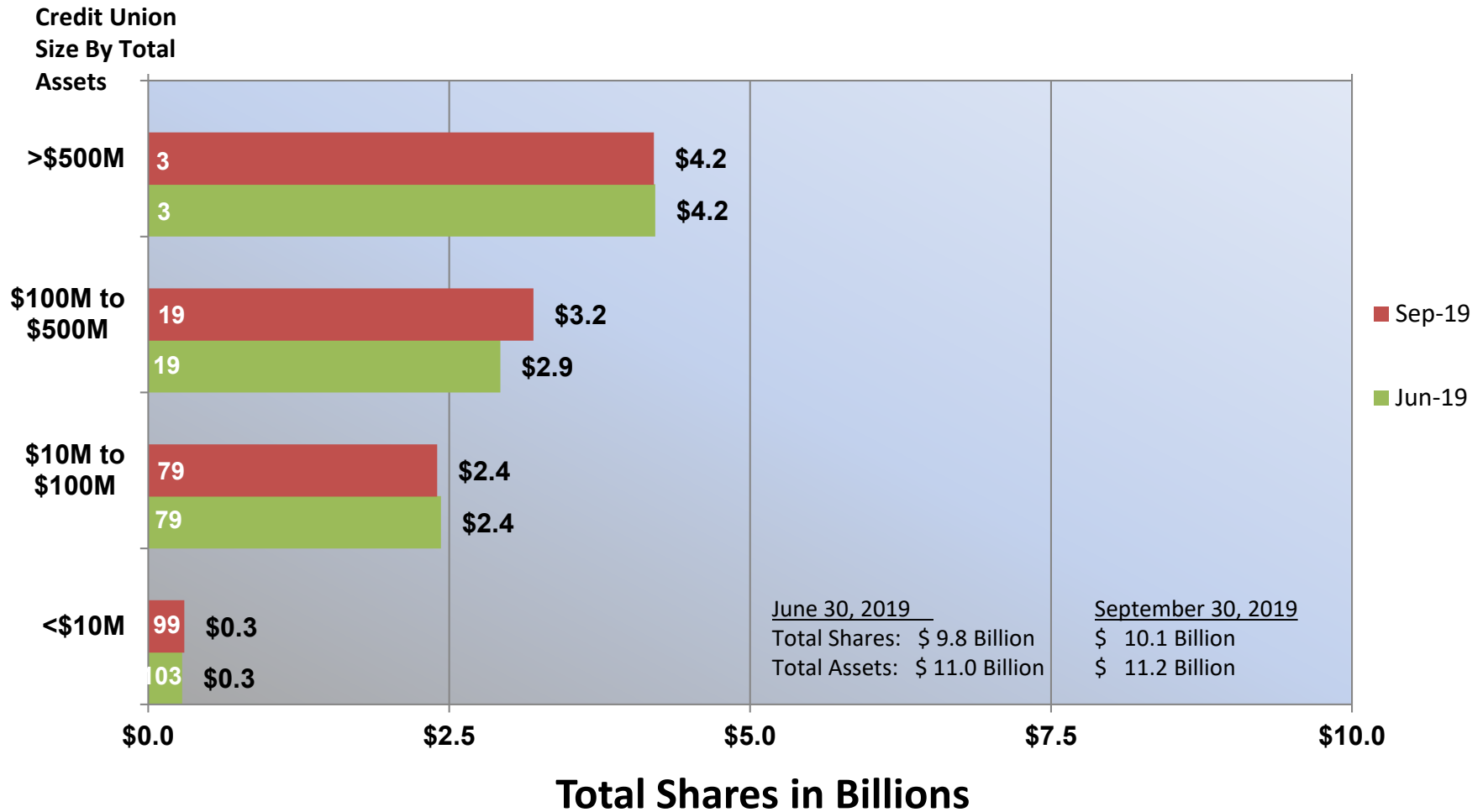


CAMEL Code 4/5 CUs with Percent to Total Insured Shares CY 2014 – CY 2019

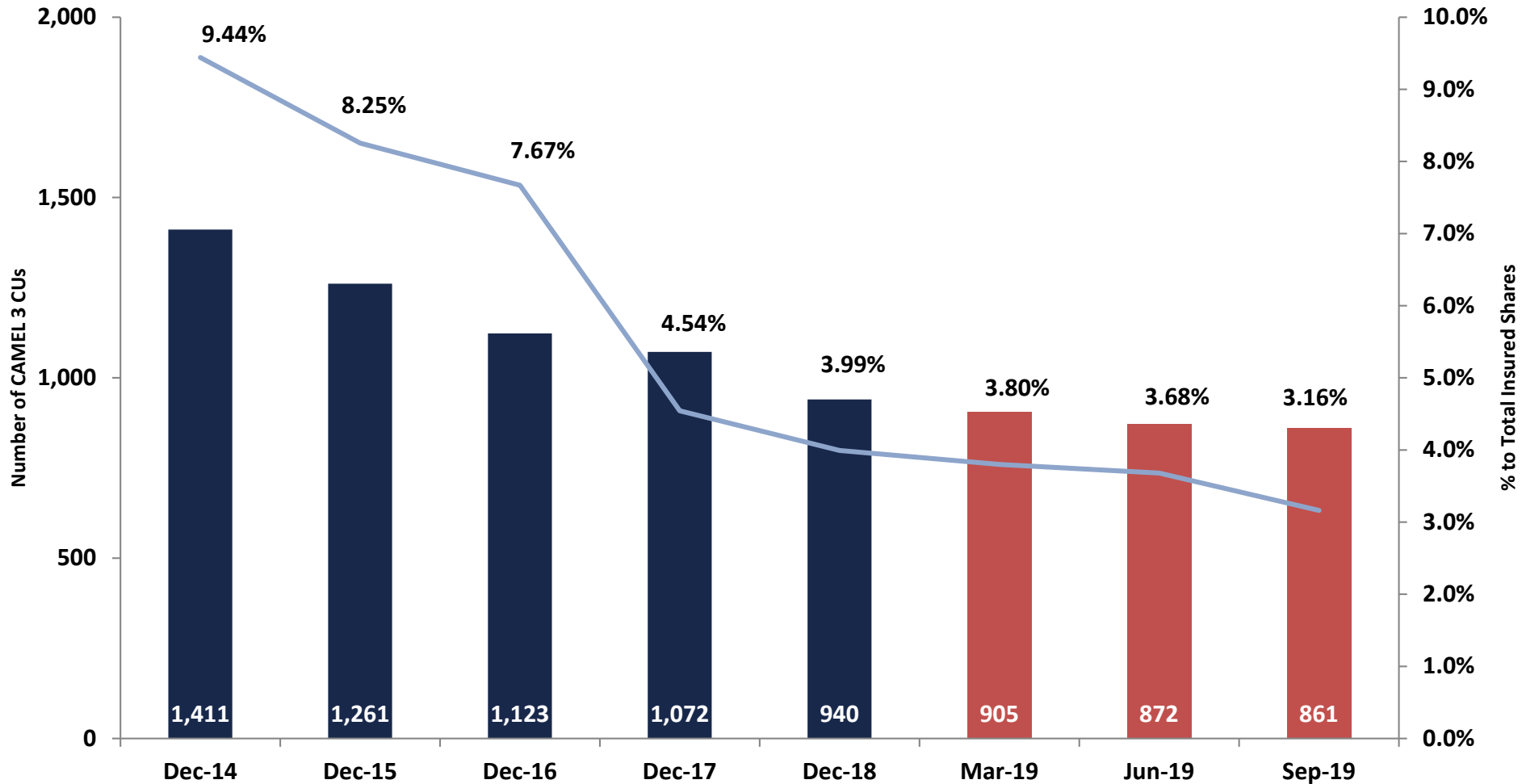


CAMEL Code 4/5 Comparison

June 30, 2019 to September 30, 2019



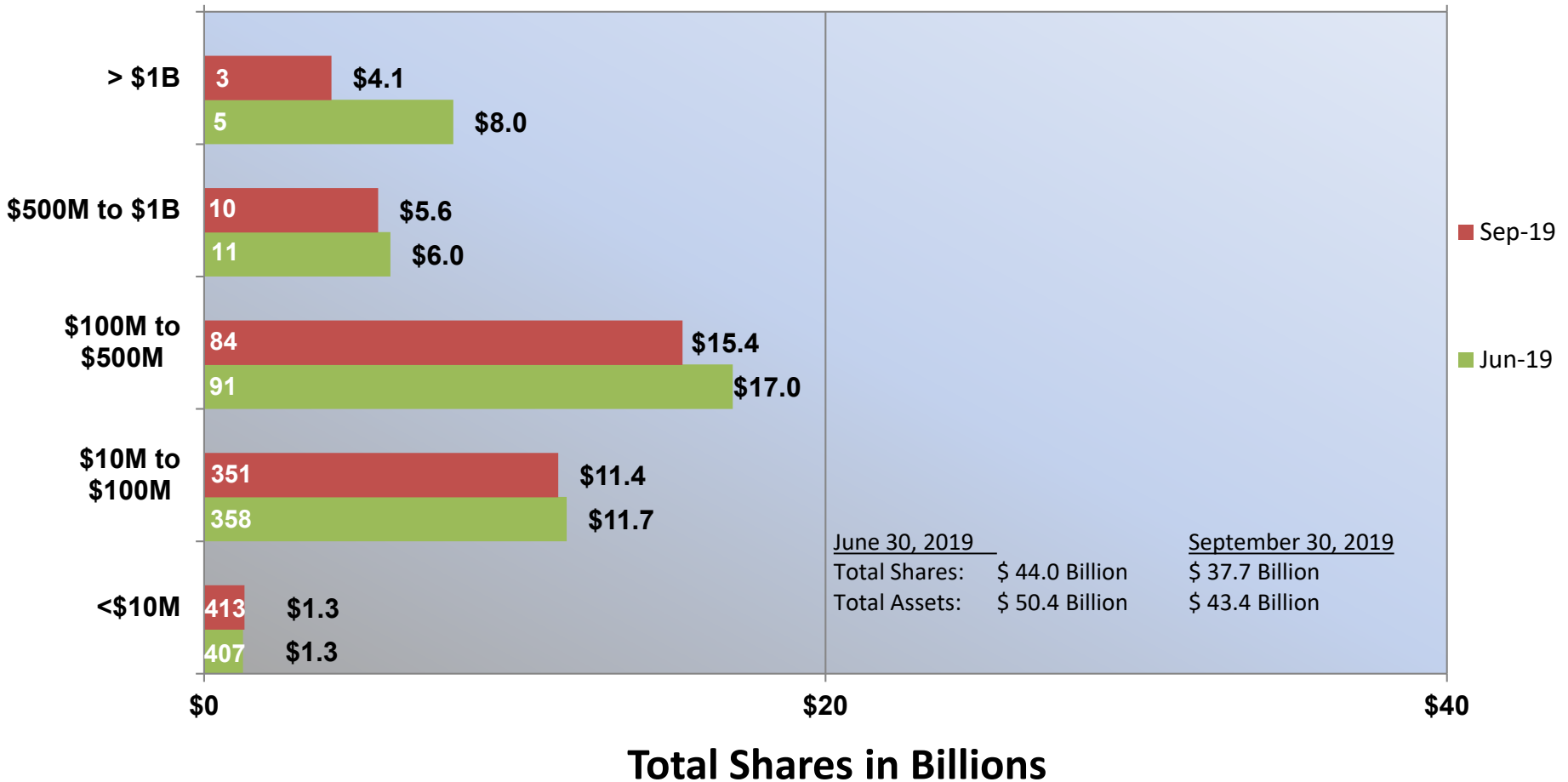
CAMEL Code 3 CUs with Percent to Total Insured Shares CY 2014 – CY 2019



CAMEL Code 3 Comparison

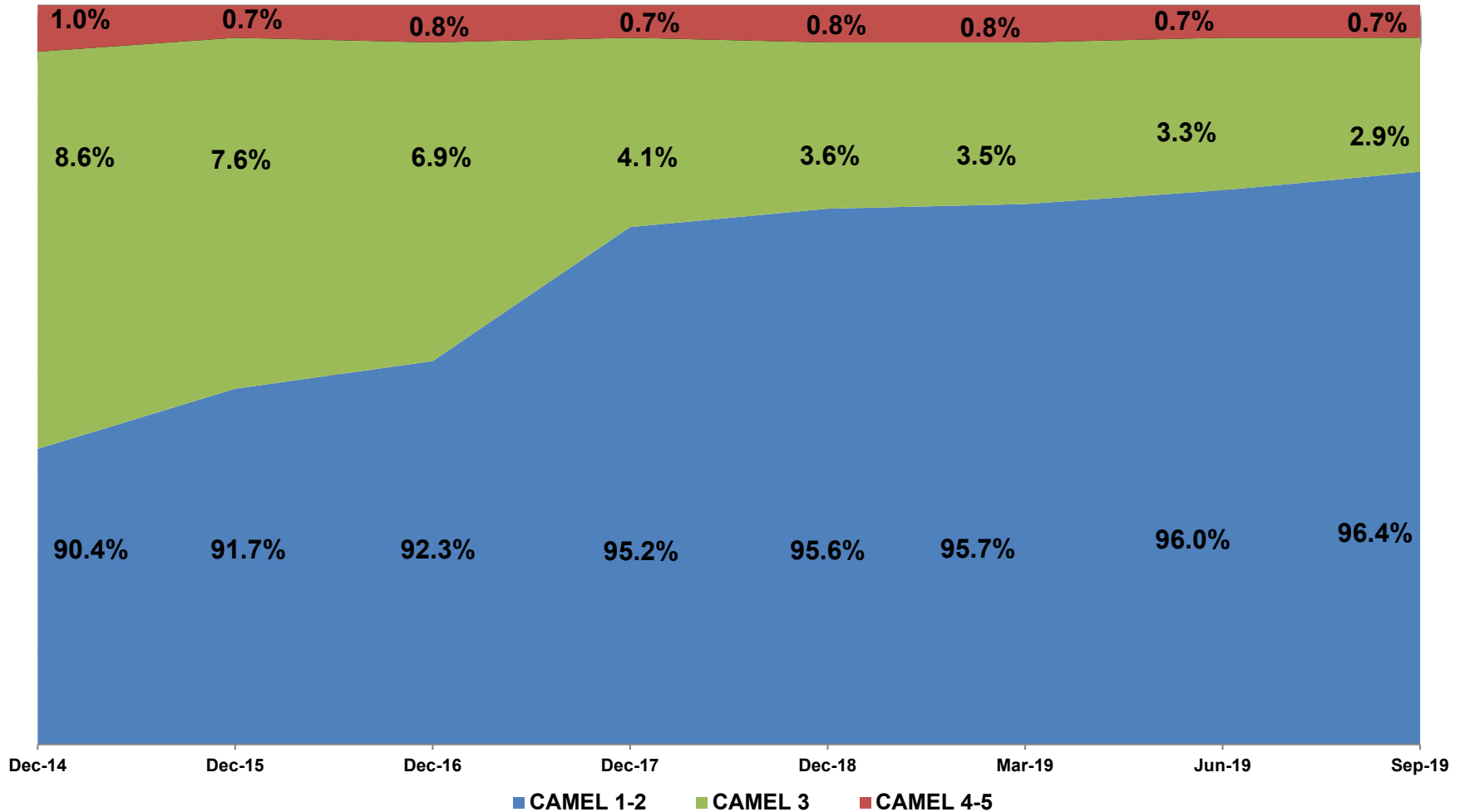
June 30, 2019 to September 30, 2019

Credit Union Size
By Total Assets



Distribution of Assets in CAMEL Codes

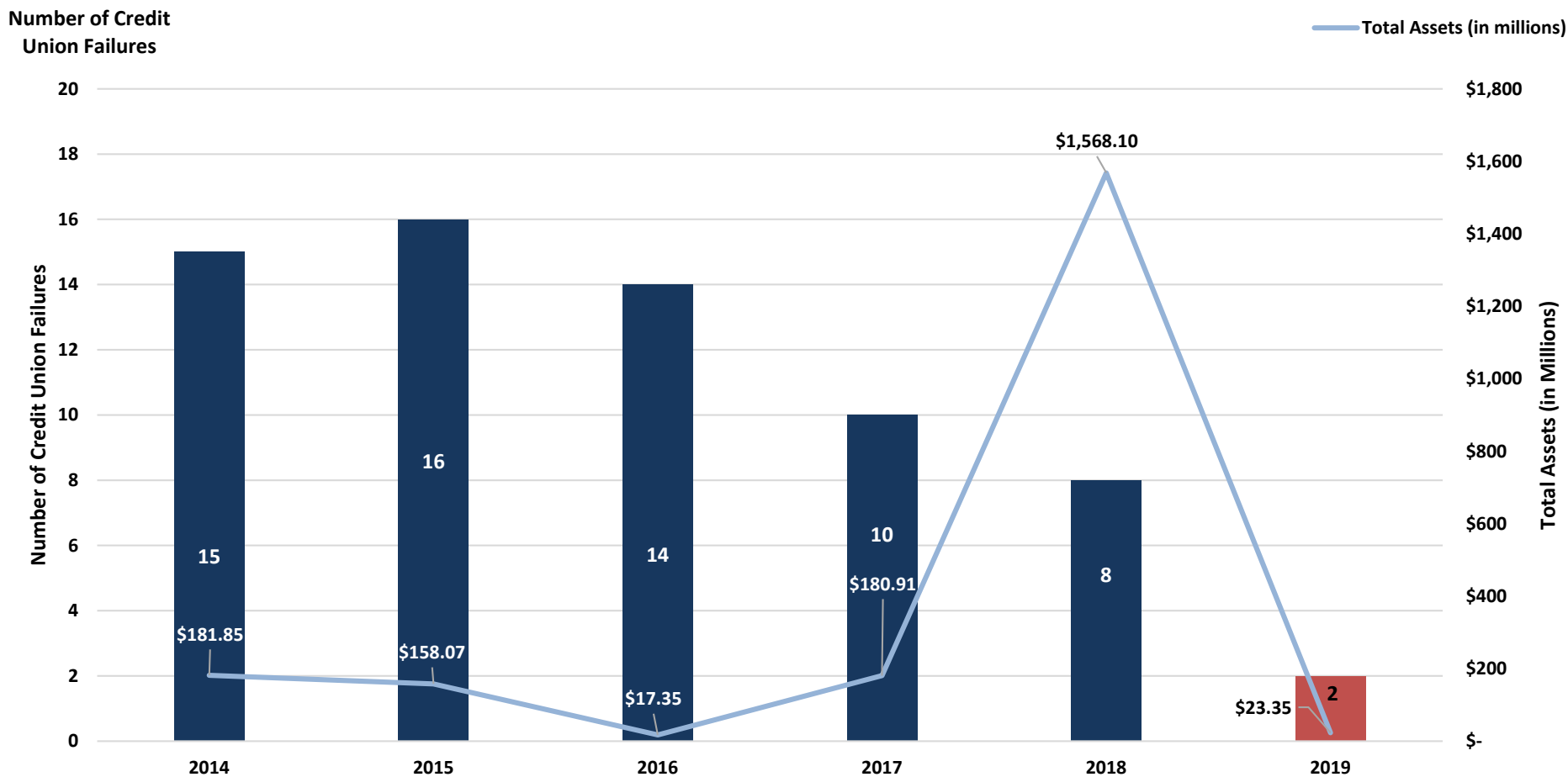
CY 2014 – CY 2019



Areas are not to scale.

Number of Credit Union Failures Incurring a Loss to the Share Insurance Fund

CY 2014 – CY 2019



Office Contact Page

Feel free to contact our office with questions or comments.

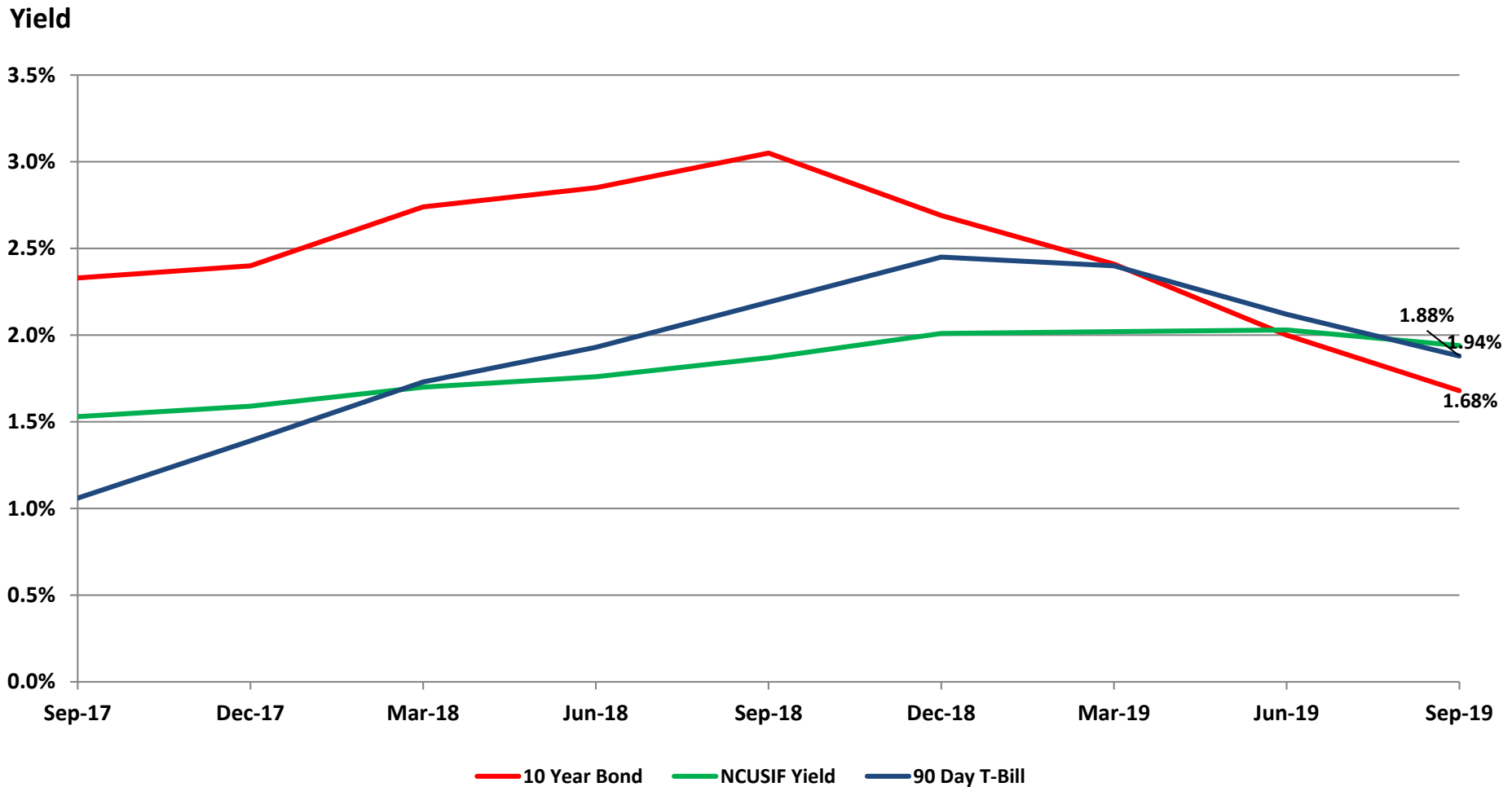
Primary Staff: Rendell L. Jones, CFO
rljones@ncua.gov

Office Phone: 703-518-6570

APPENDICES

Appendix I - Yield Comparisons

September 30, 2019



Appendix II – Distribution of Assets in CAMEL Codes

CY 2006 – CY Q3 2019

