

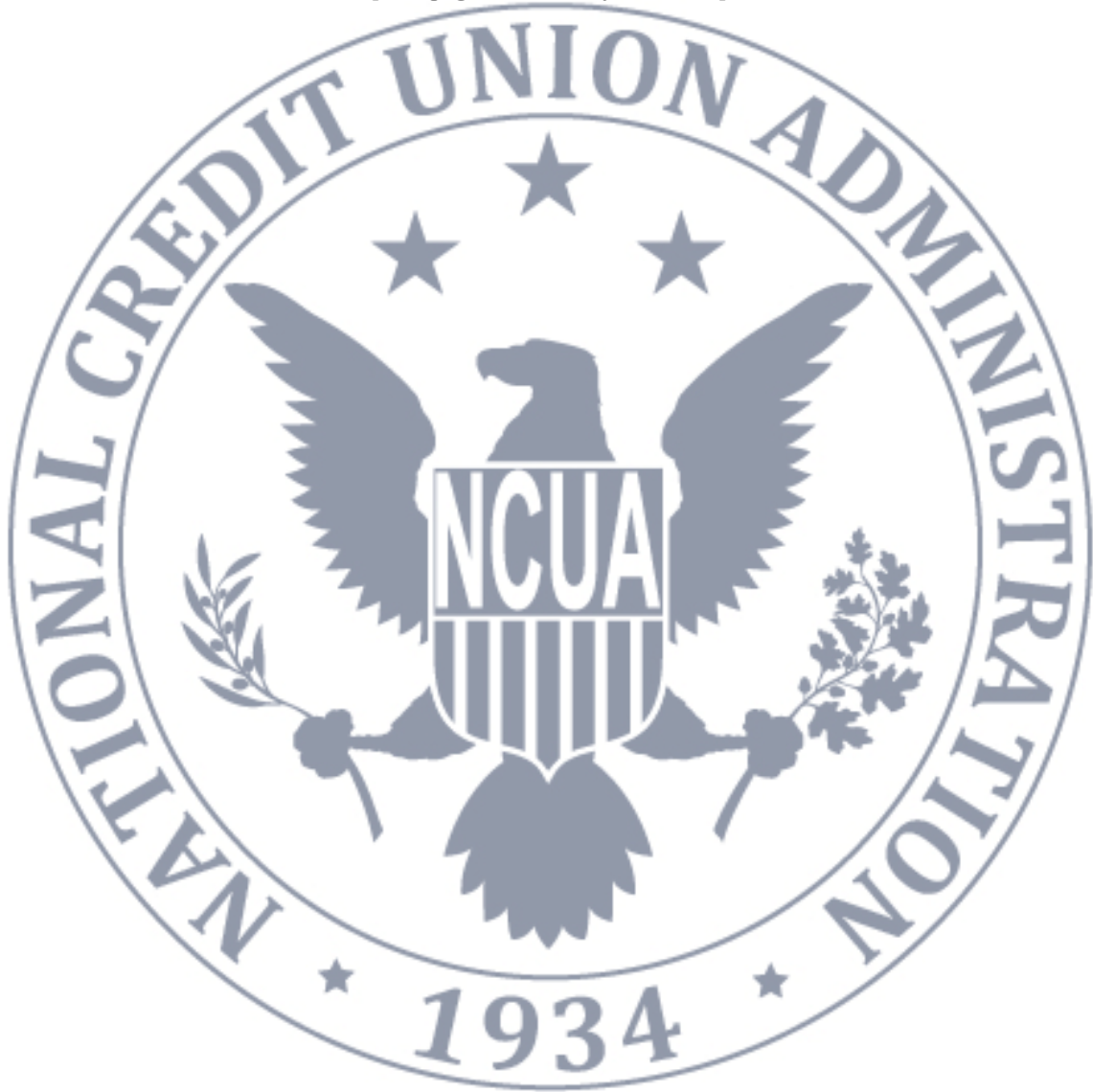


NCUA
National Credit Union Administration

Automated Cybersecurity Evaluation Toolbox (ACET) Quick Installation Guide

August 2021

[This page intentionally left blank]





ACET Quick Installation Guide • 2021

Table of Contents

ACET Quick Installation Guide • 2021.....	1
• Table of Contents	1
• Introduction to ACET	2
Introduction.....	3
Background.....	3
Objectives and Benefits.....	4
Limitations of this Tool.....	4
User Qualifications.....	5
Disclaimer.....	5
• System Basics.....	6
System Requirements Local Installation.....	6
Other Items of Note	6
• Installation Procedures	7
Figure: User Account Control box.....	7
Figure: Install dialogue	7
Figure: ACET Setup.....	8
Figure: SQL Server Setup.....	8
Figure: IIS Setup.....	9
Figure: Setup Wizard	9
Figure: Destination Folder.....	10
Figure: Ready to Install	10
Figure: Setup Successful	11
Figure: Installation Successful	11
Figure: Local Install Landing	12
.....	12
• Help Menu	13



Introduction to ACET

This section will help the user better understand the Automated Cybersecurity Evaluation Toolbox (ACET), its background, and purposes.



Introduction

The Automated Cybersecurity Evaluation Toolbox (ACET) provides the following:

- A framework for analyzing cybersecurity vulnerabilities associated with an organization's overall industrial control system (ICS) and information technology (IT) architecture;
- A consistent and technically sound methodology to identify, analyze, and communicate to security professionals the various vulnerabilities and consequences that may be exploited by cyber means;
- The means for the user to document a process for identifying cybersecurity vulnerabilities; and
- Suggested methods to evaluate options for improvement based on existing Standards and recommended practices.

Background

The ACET Maturity Assessment is an assessment of a Credit Union's Inherent Risk and Cybersecurity Maturity. The ACET provides credit unions with a repeatable, measurable and transparent process for assessing their level of cyber preparedness.

The ACET incorporates appropriate standards and practices established for financial institutions. It also aligns with the Cybersecurity Assessment Tool developed by the Federal Financial Institutions Examination Council (FFIEC) for voluntary use by banks and credit unions.

The ACET consists of two parts: Inherent Risk Profile and Cybersecurity Maturity. The Inherent Risk Profile identifies the institution's inherent risk before implementing controls. The Cybersecurity Maturity includes domains, assessment factors, components, and individual Declarative Statements across five maturity levels.

ACET is a web-based tool that guides users through a step-by-step process to collect facility-specific information addressing topics such as hardware, software, administrative policies, and user obligations. It then compares that information to relevant security Standards and regulations, assesses overall compliance, and provides appropriate recommendations for improving cybersecurity posture. The tool pulls its recommendations from a collection of the best available cybersecurity Standards, guidelines, and practices. Where appropriate, recommendations are linked to a set of actions that can be applied to enhance cybersecurity controls.



Objectives and Benefits

The primary objective of ACET is to reduce the risk of cyber attacks by identifying potential cybersecurity vulnerabilities within a system or an organization. ACET implements a simple, transparent process that can be used effectively by all sectors to evaluate any network. It offers the following benefits:

- Provides a repeatable and systematic approach for assessing the cybersecurity posture of a system, network, site, or facility.
- Provides a comprehensive evaluation and comparison to existing industry Standards and regulations.
- Combines the ICS and IT security knowledge and experience of many organizations.
- Assists in the identification of potential vulnerabilities in the network design and security policies.
- Provides guidelines for cybersecurity solutions and mitigations.
- Provides access to a centralized repository of cybersecurity requirements.
- Provides an opportunity for dialogue on security practices within the user's facility.

Limitations of this Tool

The tool has a component focus rather than a system focus. Therefore, network architecture analyses, including network hardware and software configuration analyses, will be limited to the extent that they are defined by programmatic and procedural requirements.

Most importantly, ACET is only one component of a comprehensive control system security program. A security program based on a ACET assessment alone must never be considered complete or adequate.



User Qualifications

ACET assessments cannot be completed effectively by any single individual. A cross-functional team consisting of representatives from multiple company areas is essential. The representatives must be subject matter experts with significant expertise in their respective areas. No one individual has the span of responsibility or knowledge to be able to fully and accurately answer all the questions provided by the ACET tool.

Disclaimer

"The analysis, data, and reports in ACET® are provided "as is" for informational purposes only. The NCUA does not provide any warranties of any kind regarding any information contained within. In no event shall the United States Government be liable for any damages, including but not limited to, direct, indirect, special, or consequential damages and including damages based on any negligence of the United States Government, arising out of, resulting from, or in any way connected with this report, whether based on warranty, contract, tort, or otherwise, whether injury was sustained from, or arose out of the results of, or reliance upon the report.

NCUA does not endorse any commercial product or service, including the subject of the assessment or evaluation in this report. Any reference to specific commercial products, processes, or services by trademark, manufacturer, or otherwise, does not constitute or imply its endorsement, recommendation, or favoring by NCUA.

The display of the NCUA official seal or other NCUA visual identities on this report shall not be interpreted to provide the recipient organization authorization to use the official seal, insignia or other visual identities of NCUA. The NCUA seal, insignia, or other visual identities shall not be used in any manner to imply endorsement of any commercial product or activity by NCUA or the United States Government. Use of the NCUA seal without proper authorization violates federal law (e.g., 18 U.S.C. §§ 506, 701, 1017), and is against NCUA policies governing usage of the seal.



System Basics

This section describes system requirements, installation instructions, and recommendations on how to go about preparing for the cybersecurity evaluation.

System Requirements Local Installation

It is recommended that users meet the minimum system hardware and software requirements before installing ACET. This includes:

- Pentium dual-core 2.2 GHz processor (Intel x86 compatible)
- 6 GB free disk space
- 4 GB of RAM
- Microsoft Windows 10 or higher
- Microsoft .NET Framework 4.7 Runtime
- SQL Server 2012 Express LocalDB (included in ACET installation)
- IIS Express 8 (included in ACET installation)

Other Items of Note

- For all platforms, it is recommended the user upgrade to the latest Windows Service Pack and install critical updates available from the Windows Update website to ensure the best compatibility and security.
- If the install must be made through physical media, a USB port will be required.
- If desired, HTML reports will need to be converted to PDF using an external utility.
- If the Microsoft .NET Framework 4.7 Runtime is not available on the user's computer, ACET will automatically install it, which can add several minutes to the installation time.
- Internet Explorer isn't supported.



Installation Procedures

To install ACET follow the instructions below:

Double-click on the ACETStandAlone program.

The User Account Control dialogue will come up. Select “Yes”.

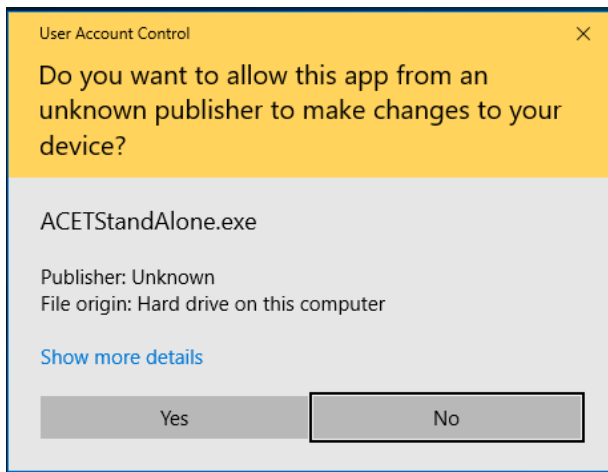


Figure: User Account Control box

A dialogue will open asking if you want to install ACET Desktop. Select “Yes”.

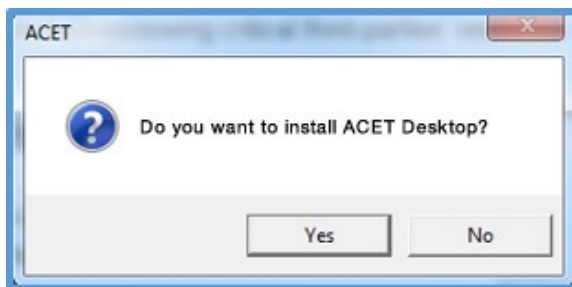


Figure: Install dialogue

The program will begin extracting.



After extracting an ACET Setup dialogue will open. Select the checkbox "I read the disclaimer" and then select "Install".

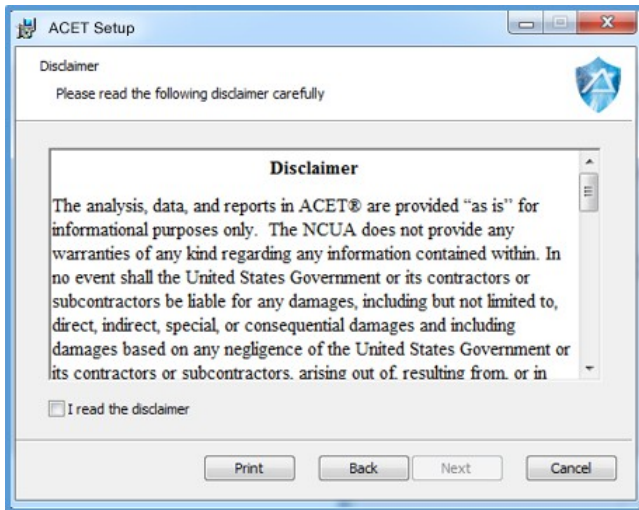


Figure: ACET Setup

ACET will begin to install. If the user doesn't have SQL Server 2012 Express, ACET will install it. The SQL Server 2012 Express Setup dialogue will open. Click "Next" and then select "Install".

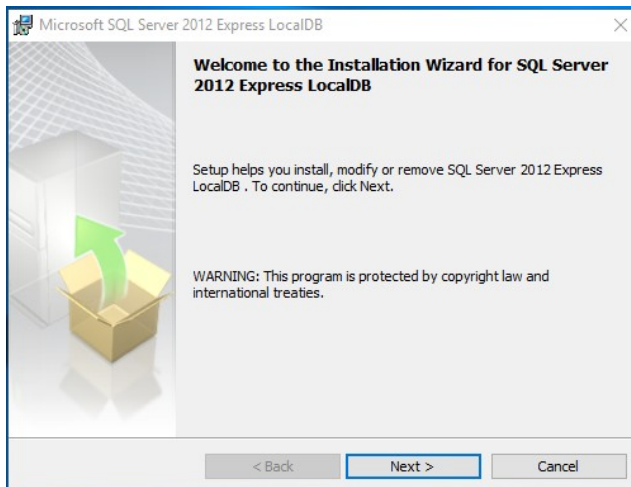


Figure: SQL Server Setup



If the user doesn't have IIS 10.0 Express, ACET will install it. The IIS 10.0 Express Setup dialogue will open. Click the check box to confirm that you "...accept the terms in the License Agreement", and then select "Install".

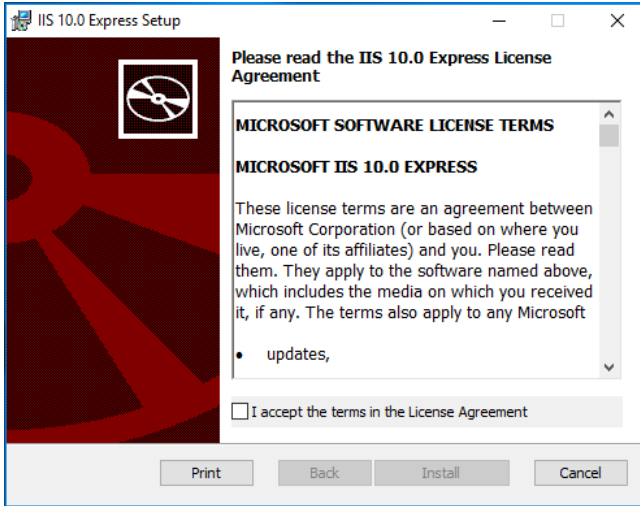


Figure: IIS Setup

IIS will install. Select "Finish" when it completes.

The ACET Setup Wizard will open to walk the user through the install process. Select "Next".

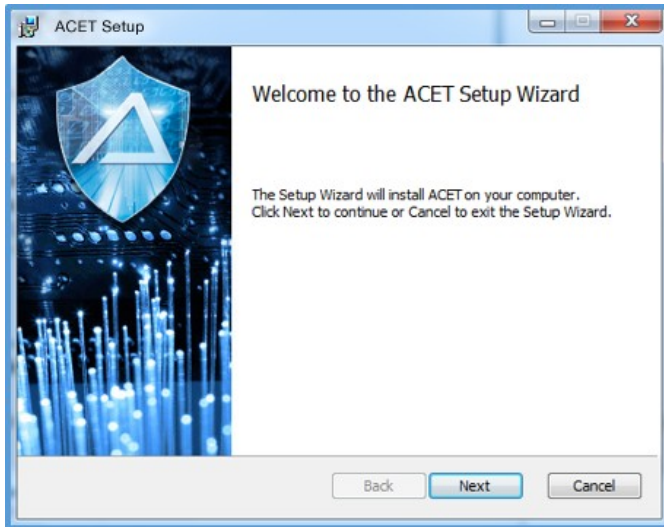


Figure: Setup Wizard



ACET will choose a default folder to install to. You can change this in the Destination Folder dialogue. Select “Next”.

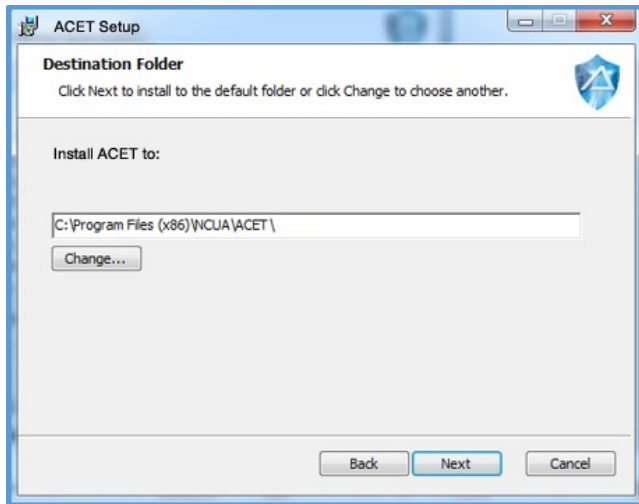


Figure: Destination Folder

The ACET Installer will show that it is ready to install, select “Install”.

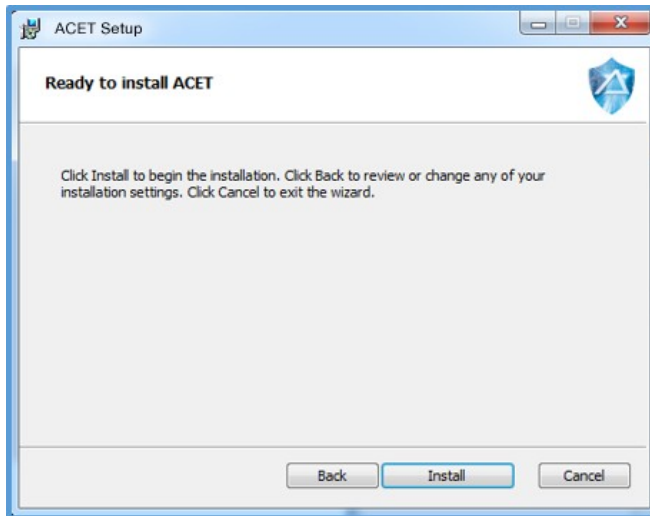


Figure: Ready to Install

ACET is now installed. Make sure that the “Launch ACET when setup exists” box is checked and select “Finish”.



The user should see a setup successful dialogue, and have an option of how they want to open the app. For this example, Microsoft Edge was used.

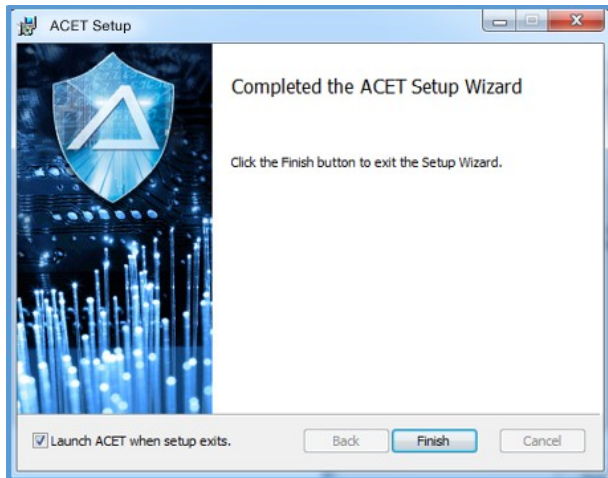


Figure: Setup Successful

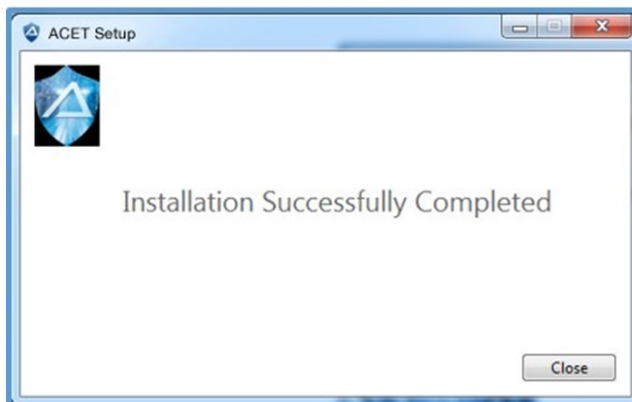


Figure: Installation Successful

After getting this message restart your machine.



The user now has access to ACET under their Windows NT user name. The Local Installation ribbon is visible at the top of the screen. They can see their landing page with no assessments at this time.

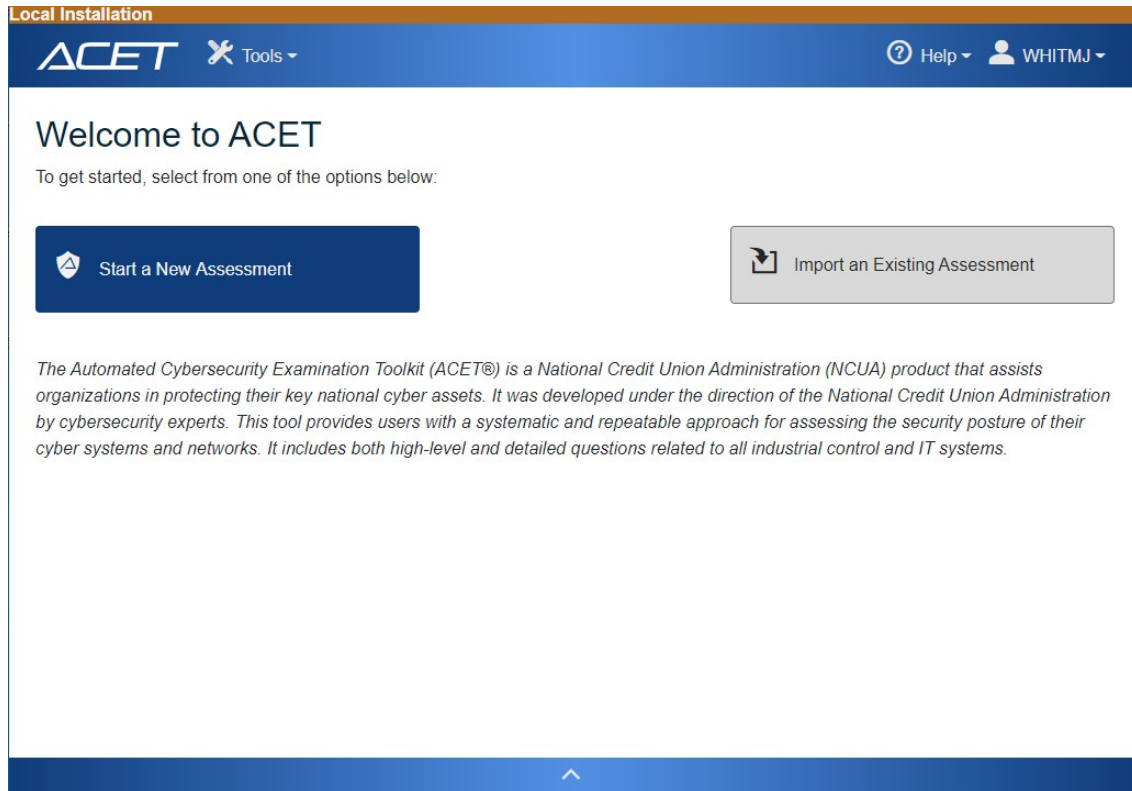


Figure: Local Install Landing



Help Menu

The Help Menu shown in the figure below allows you to access help documentation for the ACET tool.

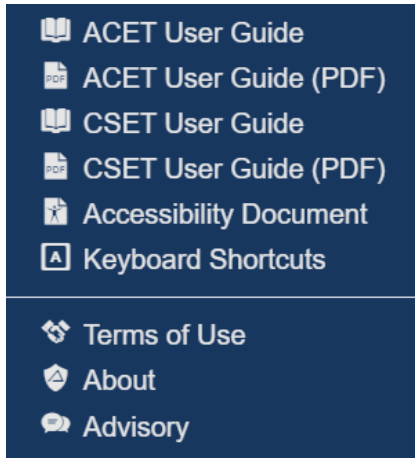
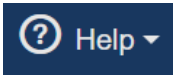


Figure: Help Menu

Click the Help menu button  to open the Help menu.

ACET User Guide: Clicking the ACET User Guide menu item will open the ACET guide as a CHM file containing screenshots and instructional information for using the ACET tool.

ACET User Guide (PDF): Clicking the ACET User Guide (PDF) menu item will open the ACET guide as a PDF file containing screenshots and instructional information for using the ACET tool.

CSET User Guide: Clicking the CSET User Guide menu item will open the CSET guide as a CHM file containing screenshots and instructional information for using the CSET features of this tool.

CSET User Guide (PDF): Clicking the CSET User Guide (PDF) menu item will open the CSET guide as a PDF file containing screenshots and instructional information for using the CSET features of this tool.

Accessibility Document: Clicking the Accessibility Document menu item will open the ACET Accessibility Features Document, which describes how ACET addresses accessibility issues including the use of high contrast mode and keyboard access.



See [Accessibility Document](#) for more information.

Keyboard Shortcuts: Clicking the Keyboard Shortcuts menu item will open the ACET Keyboard Shortcuts document, which contains a list of all keyboard shortcuts available to users of the ACET tool.

See [Keyboard Shortcuts](#) for more information.
